

SALON ACCESSORIES

For Salons, Male Grooming Salons,
Hotels, VIP rooms and Beauty Spas.

Trolleys and wagons, stools and accessories working for your salon to improve the efficiency and enjoyment of every aspect of salon activity.

From preparation to delivery, from behind the scenes to being at your side, or just taking all the weight off your feet – these are very high value workmates.

FEATURED PRODUCTS:

Trolleys & Wagons:

Kita Wagon, D-Galley Wagon, Stack Trolley,
Chair-Side Nail Wagon & Maxim Wagon

Stools:

D-Stool Alumi, D-Stool Clear & Yume Stool

Convenience & Care:

Asista II, Hot Cabi & Mini Cabi

SALON ACCESSORIES – TROLLEYS & WAGONS

A series of compact and functional salon trolleys to add cool convenience to your treatment services or every day salon work. Loaded with an array of clever features to make life easier and tidier, while giving service becomes much more pleasant.

Trolleys make it possible to have everything prepared off-floor and close to hand during service. Takara Belmont trolleys and wagons are mounted on smooth-running castors for bump-free service and easily rolled between stations and clients.



1

2



KITA WAGON

Designed by the famous Toshiyuki Kita.

The most compact trolley with a detailed, technical look finished in silver with options for tray type. Three removable trays and a top level work surface provide plenty of storage and make salon work simple.

Two trolleys to choose from.

TYPE A ¹ FEATURES INCLUDE silver-grey finish, 3 removable, stainless steel trays and wood-trim walking handle. 4 Black-Grey double-castors.

TYPE B ² FEATURES INCLUDE silver-grey finish, 3 removable, semi-transparent, acrylic trays and wood-trim walking handle. 4 Black-Grey double-castors.

DIMENSIONS (mm) & WEIGHT

H: 934, W: 483, D: 340, Wt: 13kg



D-GALLEY WAGON

Clinically proven D-Series convenience. **NEW**

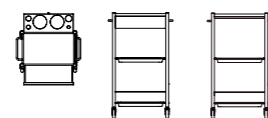
Solid, all-in design with multiple storage solutions – a drawer, trays and a shelf as well as the top level work surface provide plenty of space for any type of service. The removable trays are set on retractable runners for the easiest possible use during preparation or service.

FEATURES INCLUDE chrome finish, deep set drawer, 2 stainless steel removable trays and retractable shelf with holders for a drier, brushes and small utility bowls. Mirror holder. 4 Red castors.

Available with ¹ or without the drawer.

DIMENSIONS (mm) & WEIGHT

H: 916, W: 452, D: 335, Wt: 15kg



SALON ACCESSORIES – TROLLEYS & WAGONS

DESIGNED FOR Salons, Male Grooming Salons, Hotels, VIP rooms and Beauty Spas – especially where convenience and presentation is required.



STACK TROLLEY

Compact as one, stackable as many.

The two trays easily fold down after use and multiple trolleys nest tightly together to spare valuable floor-space.

FEATURES INCLUDE chrome finish, 2 stainless steel foldable-trays and detachable walking handle. 4 Black double-castors.

DIMENSIONS (mm) & WEIGHT

H: 865, W: 500, D: 370, Wt: 12kg



CHAIR-SIDE NAIL WAGON

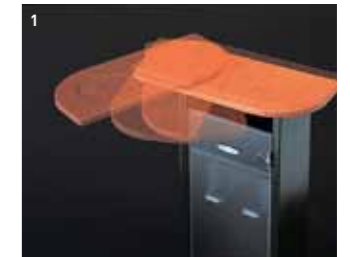
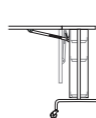
Kit at your fingertips.

An ultra-slim trolley designed specifically for Nailists, the fold-out table top is the best way to create working space when it's needed.

FEATURES INCLUDE silver finish, 3 open storage compartments and fold-out table top. 4 Grey castors.

DIMENSIONS (mm) & WEIGHT

H: 750, W: 440, D: 340, Wt: 5kg



MAXIM WAGON

Gentlemanly conduct.

Designed to coordinate with the luxurious Maxim chair, the wood-trim styling distinguishes this trolley from all others.

FEATURES INCLUDE wood and glass combination, shelved storage behind a frosted door, extending-rotatable table-top ².

4 Black castors with chrome trim.

DIMENSIONS (mm) & WEIGHT

H: 755, W: 420, D: 340, Wt: 11kg

COLOUR OPTIONS:

Brandy Red, Blue, Forest Green or Sand Beige.



SALON ACCESSORIES – STOOLS

Better working comfort for Stylists and Technicians inevitably raises their quality of work. Working at the correct height improves posture and seated instead of standing saves energy.



D-STOOL ALUMI & D-STOOL CLEAR

The sharpest cutting stools around.

Representing the highest heights for cutting stools, D-Stool is right up there displaying typical D-Series qualities: choose from 'Clear', a solid scratch-resistant acrylic seat or 'Alumi', the original brushed aluminium version.

FEATURES INCLUDE aluminium ¹ or transparent acrylic ² seats, hydraulic-sprung seat and height-adjustment, 5 transparent resin, smooth-running castors.

DIMENSIONS (mm) & WEIGHT

H: 445-665, W: 600, D: 600, Wt: 7.3kg [Alumi], 8.4kg [Clear]



YUME STOOL

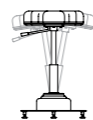
It moves around on a clever, flexible stem.

A super-flexible stool which moves freely, any-which-way with the user: by removing the sliding about to reach around the client's head, the seated shampoo or head massage service can be as comfortable for the technician ^A as it is for the client.

FEATURES INCLUDE padded, ergonomic seat, hydraulic sprung-seat and height-adjustment, stable, flexible stem and heavyweight base and feet.

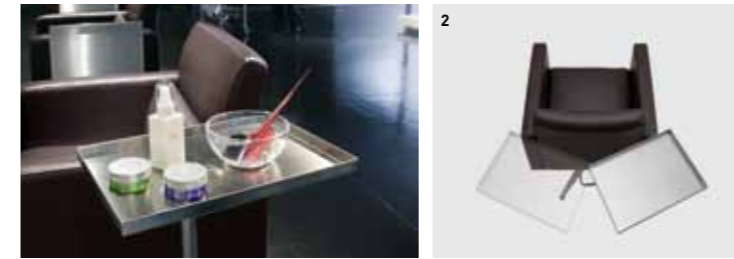
DIMENSIONS (mm) & WEIGHT

H: 485-672, W: 415, Wt: 15kg



SALON ACCESSORIES – CONVENIENCE & CARE

Wherever an accessory might improve convenience or add value to a salon service, Takara Belmont likes to step up. Being better-prepared and well-equipped tends to improve the quality of creative work: this of course is a benefit to clients and therefore business.



ASISTA II

A tray-wagon, practically beautiful. **NEW**

A stainless steel, chair-mounted tray to make all kinds of salon work easier and tidier. Asista II rotates ² all the way around the chair and looking as good as it does, there is no reason not to be completely practical. When not in use, it folds down beautifully ¹, completely unobtrusive and uncompromising on good looks.

Tidiness reflects well, being equipped feels great and having a drier-holder so close to the chair is ideal.

FEATURES INCLUDE stainless steel finish, drier-holder and fold-down work-surface ¹. 3 arm lengths for compatibility with any Takara Styling chair.

DIMENSIONS (mm) & WEIGHT

H: 755, W: 420, D: 830, Wt: 3.7kg



DESIGNED FOR Salons, Male Grooming Salons, Hotels, VIP rooms and Beauty Spas.



HOT CABI & MINI CABI

Towel warmer with sterilisation function.

A very compact, energy-efficient and invaluable tool in a salon offering beauty or grooming services. The Hot Cabi ¹ can hold 50-70 hand towels in its 13 litre capacity: the Mini Cabi ² by comparison holds 25-30 towels.

FEATURES INCLUDE ultra-violet sterilisation, temperature control, removable basket and drain tray.

DIMENSIONS (mm) & WEIGHT

HOT CABI: H: 290, W: 455, D: 320, Wt: 7.5kg

MINI CABI: H: 230, W: 300, D: 307, Wt: 4kg

